

Trane CGAN 400

Specifications

Brand	Trane
Type	CGAN 400
Product type	Air Cooled Chiller
Capacity kW	102.8
Capacity Tons	29,0
Refrigerant	Freon
Refrigerant Type	R407C
Pump	✓
Weight in kg.	1252
Sizes	3300x1100x2100 mm (LxWxH)
Remarks	Y.o.b. 2004
Remarks	Condenser is made of copper with copper blades
Stock	2

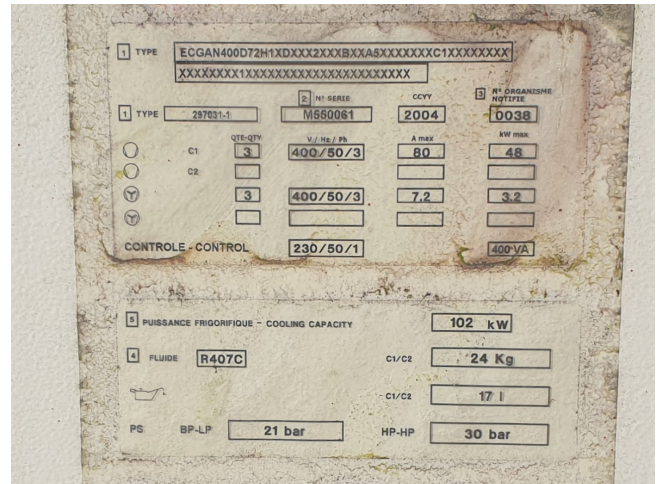


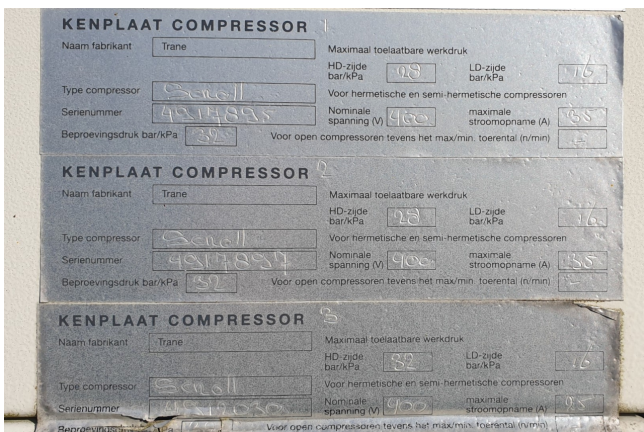
Description

Used Trane CGAN 400

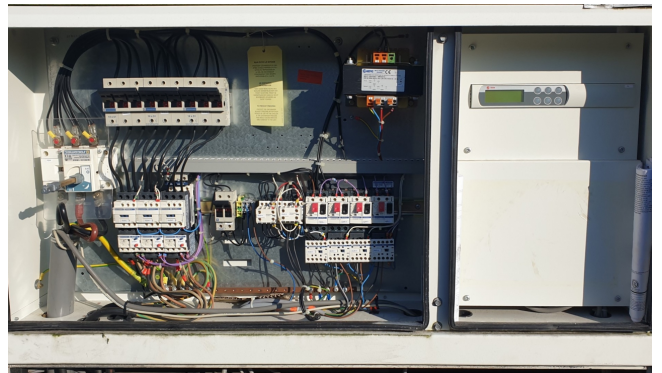
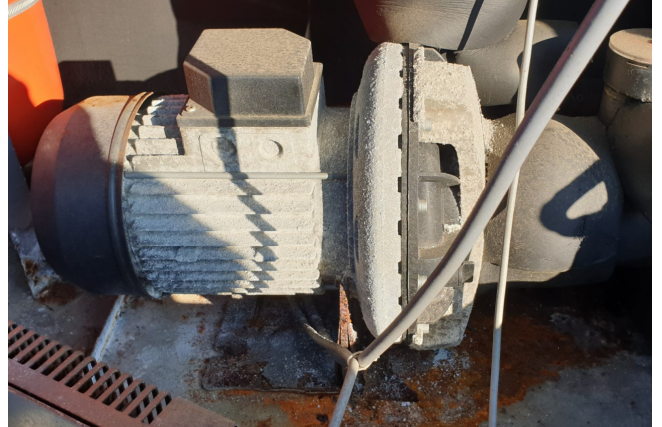
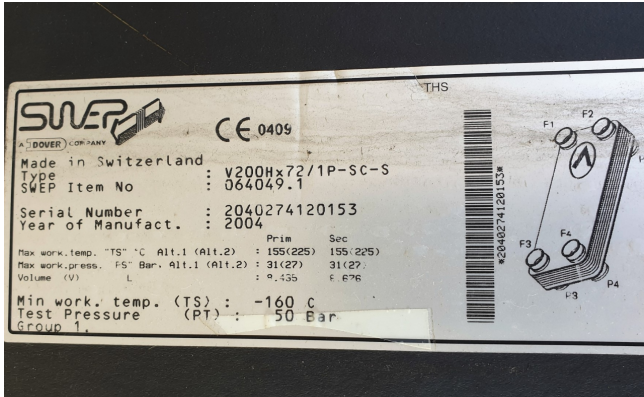
Used Trane CGAN 400 air cooled chiller. Consisting of the following components: 3x Trane Scroll compressors (2x) CSHA 150K and (1x)CSHA 100K. 3x Ziehl Abegg fans 50 Hz - 1,05 kW - 680 RPM - diameter 800 mm and 37.300 m³/h. Expansion vessel, pump and pressure gauges. Condenser is made of copper with copper blades. Y.o.b. 2004.

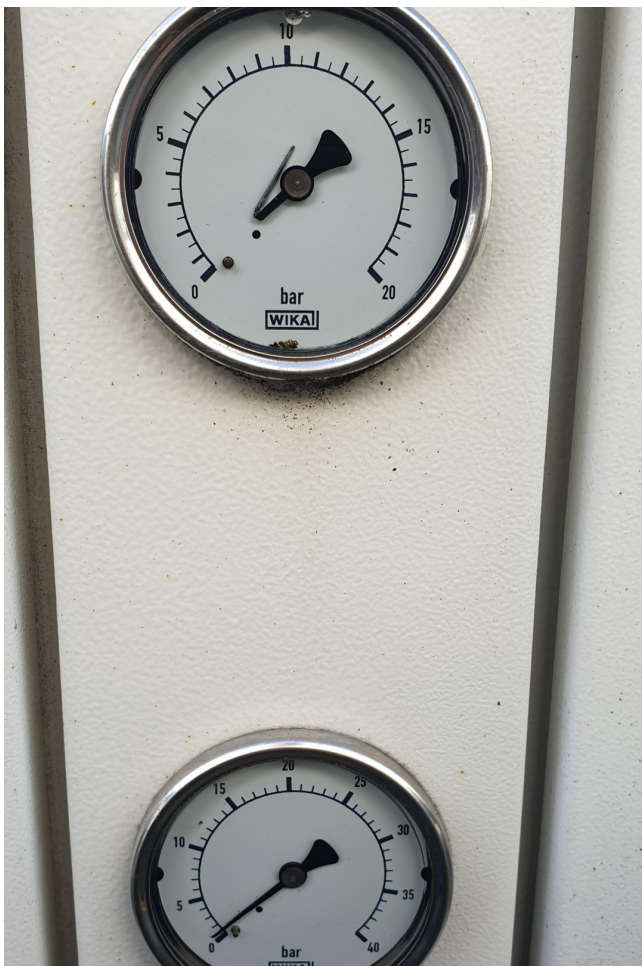
*Why choose for HOSBV? Were not only the largest used refrigeration specialist in Europe, but also, we deliver all equipment including an extensive test, warranty and industrial cleaning. Optional we can arrange shipment and export documents.











Tabel 1 - Alleen CGAN koeling - Standaardserie - R407C

	CGAN 200	CGAN 250	CGAN 300	CGAN 350	CGAN 400	CGAN 450
Eurovent specificaties (1)						
Netto koelvermogen (kW)	55.7	62.5	70.2	78.8	87.8	132.3
Opgevoerd vermogen bij koelen (kW)	78.1	84.4	94.8	104.4	114.4	159.8
Waterdruk (kPa)	29	33	38	43	48	44
Beschikbare druk (kPa)	195	180	173	139	195	181
Netvoeding	400/3/50	400/3/50	400/3/50	400/3/50	400/3/50	400/3/50
Opgegeven stroom						
Nominale (A)	47	57	69	89	102	111
Aansluitstroom (A)	148	203	215	236	247	336
Unitvermogen bij koelschikking (kW)	10	10	10	10	10	10
Max. diameter voedingskabel (mm²)	16	35	35	95	95	95
Max. diameter voedingskabel (mm²)	16	16	16	50	50	50
Compressor						
Aantal	2	2	2	3	2	2
Type	Scroll	Scroll	Scroll	Scroll	Scroll	Scroll
Model	(10T+10T)	(10T+10T)	(10T+10T)	(10T+10T+10T)	(20T+20T)	(20T+20T)
Nominale stroom (A)	10+10	10+10	10+10	10+10+10	20+20	20+20
Stroom per gekoelde rotor (A)	10	10	10	10	20	20
Motorvermogen (kW)	2900	2900	2900	2900	2900	2900
Vermogensfactor	0.84	0.85	0.85	0.85	0.87	0.87
Capaciteitsvermogen (kW)	100	160	160	160	150	150
Verdampers						
Aantal	1	1	1	1	1	1
Type	Gesoldeerde plaat	Gesoldeerde plaat	Gesoldeerde plaat	Gesoldeerde plaat	Gesoldeerde plaat	Gesoldeerde plaat
Model	V200-20	V200-40	V200-64	V200-72	AC 120-100 ED	AC 120-120 ED
Actieve systeeminhoud (l)	8.3	8.3	8.3	10.5	11.3	12.6
Koudeproductievermogen (kW)	115	115	115	115	115	115
Unit water aansluitingen	Male ISO R7	Male ISO R7	Male ISO R7	Male ISO R7	Male ISO R7	Male ISO R7
Doorsnede water aansluitingen	2"	2"	2 1/2"	2 1/2"	2 1/2"	2 1/2"
Boten						
Type	Ingekepte lamel	Ingekepte lamel	Ingekepte lamel	Ingekepte lamel	Ingekepte lamel	Ingekepte lamel
Levensduur (mm)	2400	2400	2400	2400	2400	2400
Hoogte (mm)	1422	1422	1422	1626	1626	1626
Voorzijde (mm)	3.54	3.54	4.12	4.71	4.71	4.71
Profiel	2	2	3	3	4	4
Lamellen per voet	194	180	180	180	168	168